



Stoneacre  
Properties



## Pennington Street

Woodhouse Leeds, LS6 2JP

Offers Over £210,000



# Pennington Street

Woodhouse Leeds, LS6 2JP

## Offers Over £210,000



### RECEPTION ROOM

High ceilings, laminated wood strip flooring, low voltage inset spotlights, radiator, double glazed window, open plan to kitchen, stairs to first floor accommodation.

### OPEN PLAN KITCHEN

Range of fitted wall and base units, stainless steel sink unit, built in oven and four ring gas hob with extractor hood over, tiled flooring, double glazed window, stairs to and lower ground floor accommodation.

### BEDROOM FOUR

Situated to the lower ground floor. Double glazed window, radiator, low voltage inset spotlights.

### LOWER GROUND BATHROOM

Comprising tiled bath with shower attachment, pedestal wash hand basin, low voltage inset spotlights, radiator, part tiled walls.

### FIRST FLOOR

#### BEDROOM TWO

Radiator, double glazed window, built in cupboard.

#### BEDROOM THREE

Radiator, built in cupboard, double glazed window.

### SECOND FLOOR

#### BEDROOM ONE

Built in cupboard, radiator, double glazed window.

### BATHROOM

Spacious suite comprising tiled bath with shower attachment, low level WC, pedestal wash hand

basin, tiled flooring, part tiled walls, double glazed window.



## Road Map



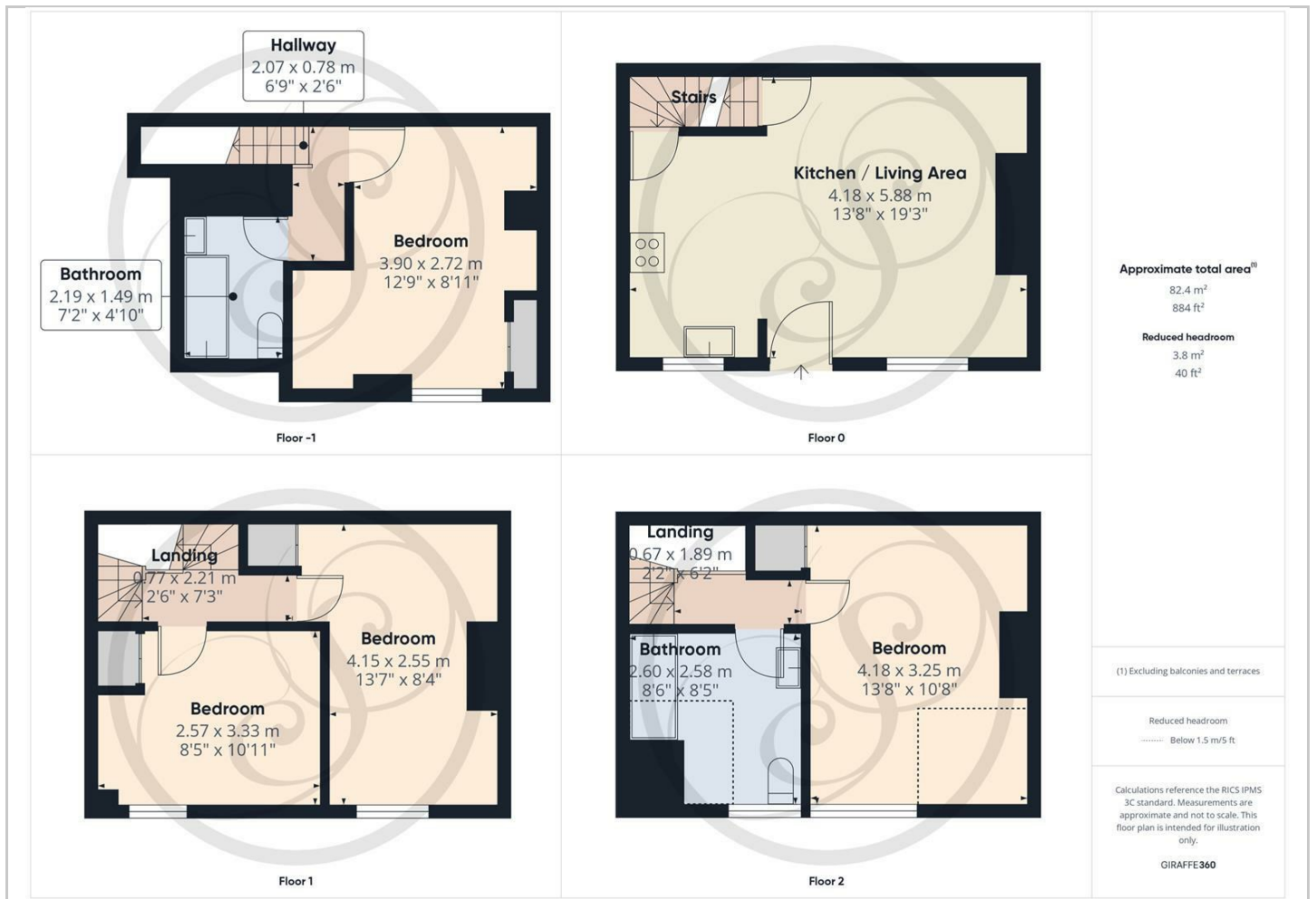
## Hybrid Map



## Terrain Map



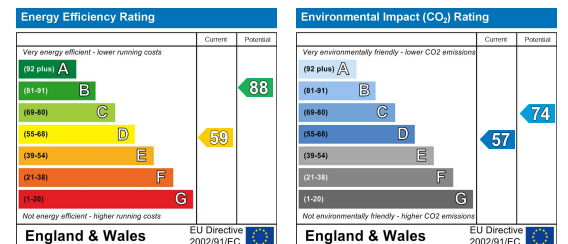
## Floor Plan



## Viewing

Please contact our Chapel Allerton Sales Office on 0113 237 0999 if you wish to arrange a viewing appointment for this property or require further information.

## Energy Efficiency Graph



These particulars, whilst believed to be accurate are set out as a general outline only for guidance and do not constitute any part of an offer or contract. Intending purchasers should not rely on them as statements of representation of fact, but must satisfy themselves by inspection or otherwise as to their accuracy. No person in this firm's employment has the authority to make or give any representation or warranty in respect of the property.